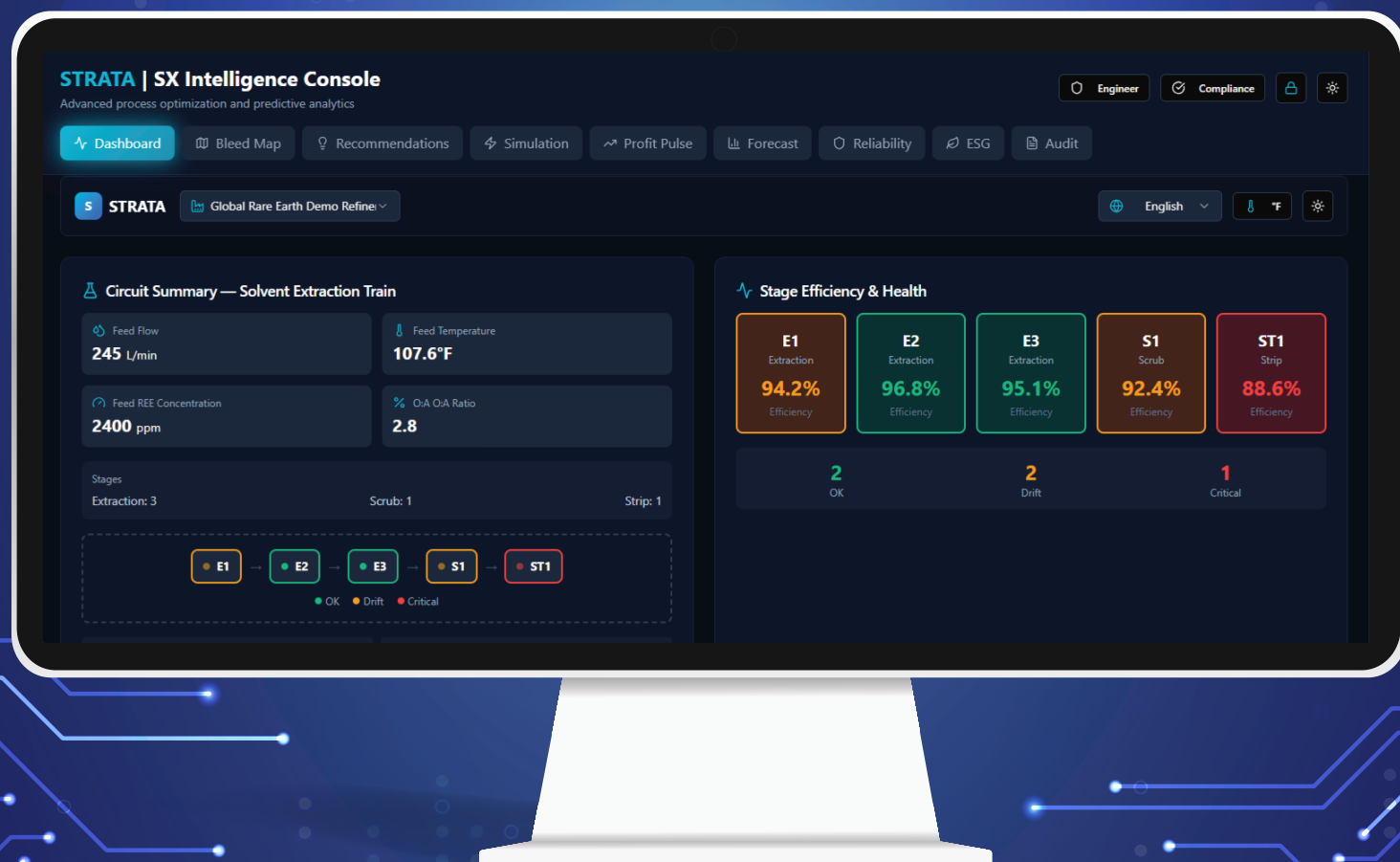


SABIAN

STRATA

SOLVENT EXTRACTION SEPARATION MONITORING

Built by Sabian Global Inc.



POWERED BY SABIAN AI

What STRATA Is

STRATA is a solvent extraction separation monitoring system for operating and commissioning SX circuits.

It connects to existing process historian data and runs in parallel with live SX operations.

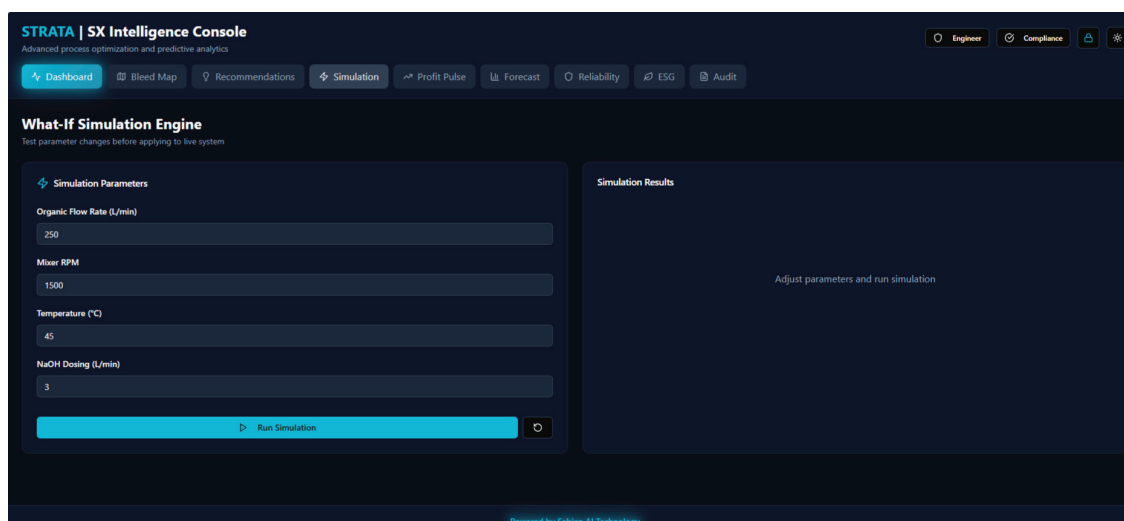
STRATA observes separation behavior continuously and generates real time operational insight.

How STRATA Works

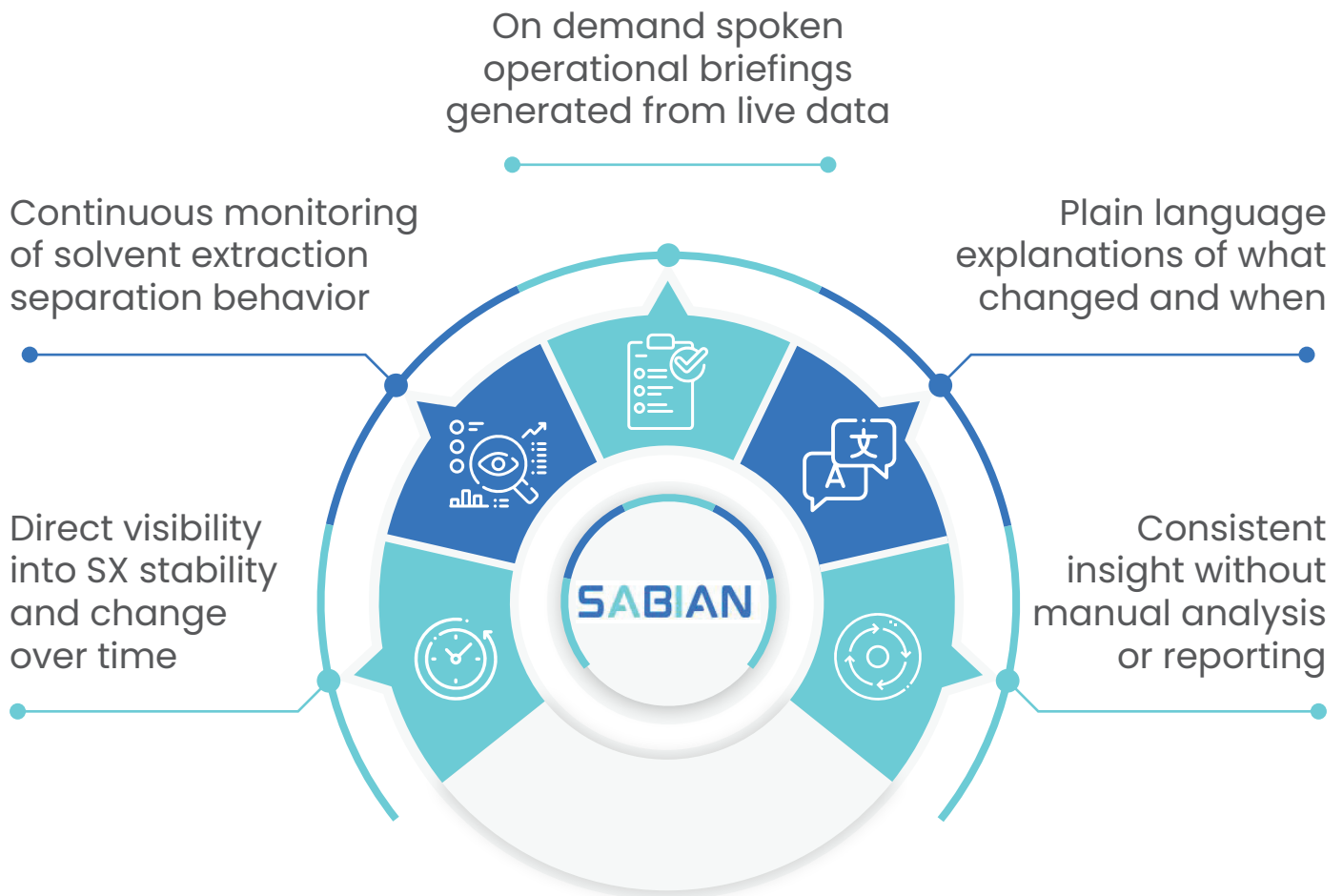
STRATA ingests live and historical SX process data from existing plant systems.

It monitors separation behavior across operating windows and detects changes in stability, drift, and state.

STRATA converts this behavior into clear operational podcast insights that can be reviewed instantly or generated on demand.



What STRATA Delivers



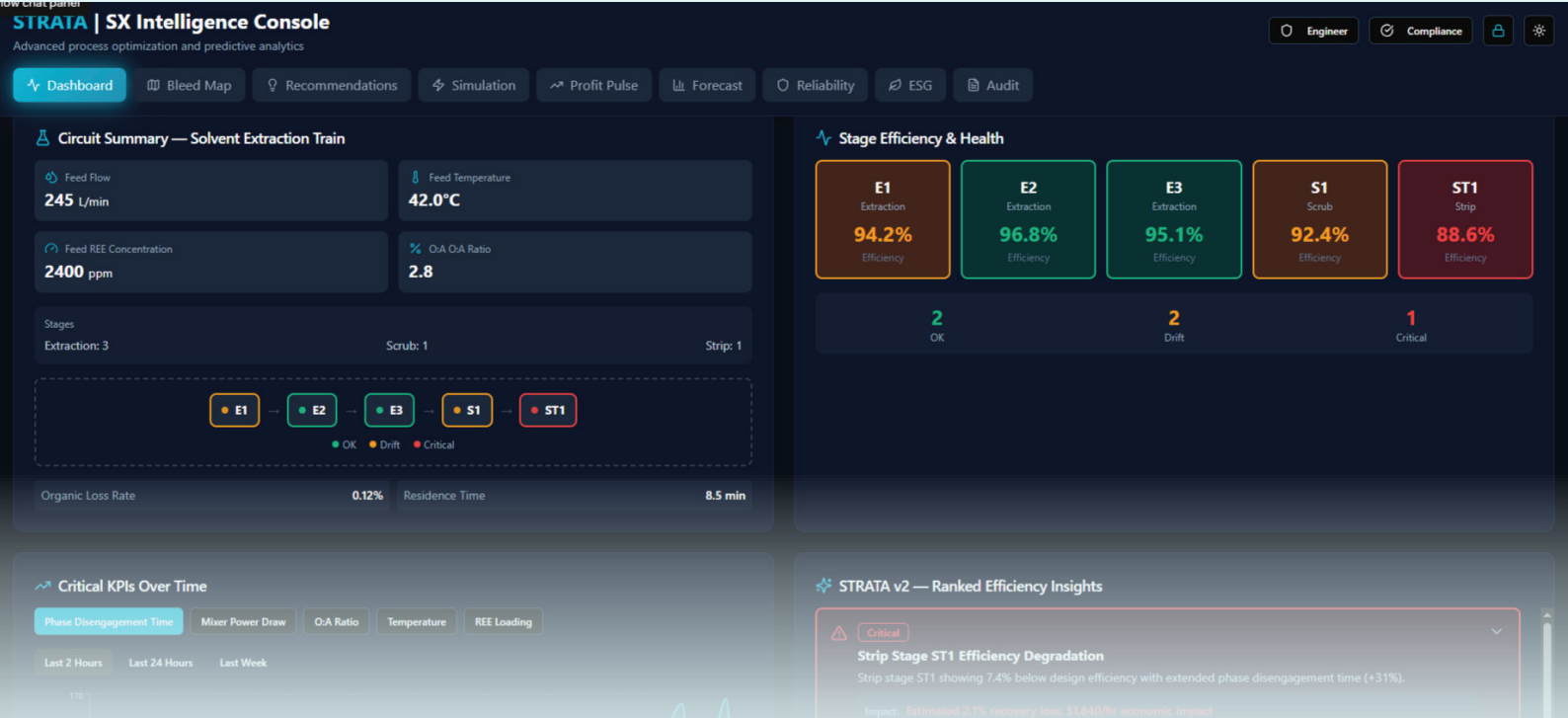
Audio Insight

STRATA includes a built in audio insight engine.

At any time, operators can generate a spoken SX briefing based on current and recent operating data.

The system explains separation behavior in plain language without dashboards, charts, or interpretation.

This allows SX performance to be understood immediately by operators, metallurgists, and management.



Where STRATA Is Deployed



How STRATA Is Installed

01

Connects to existing historian and process data

02

Runs independently alongside operations

03

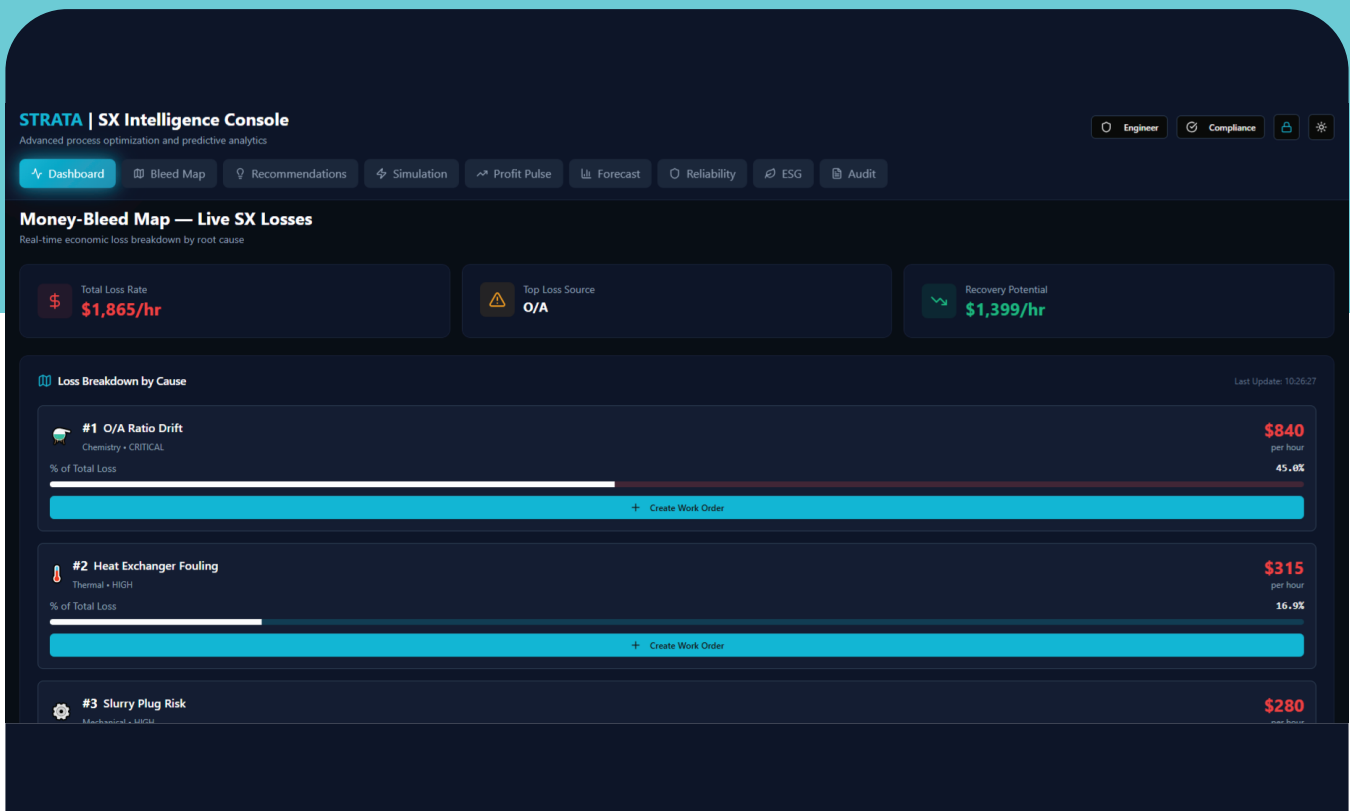
Does not modify controls, chemistry, or procedures

04

Can be deployed as a pilot or continuous system



Who Uses STRATA



Contact

STRATA

*Solvent Extraction
Separation Monitoring*



+1 702 666 4949



support@sabian.ai



sabian.ai

Disclosure

STRATA does not alter plant controls, chemistry, setpoints, or operating procedures.
STRATA operates independently alongside existing systems.

SABIAN